

Happy Easter! Welcome to the first (or 2nd if you've completed the one in Manor Fields) **SSELP and Beyond The 4 Walls family treasure hunt walk.**

Take a look at the map below and follow the walking icons. You can start anywhere. There is parking on Infield Lane, Olivers Mount and at the start of Europe Link road. There are 18 questions to answer along the way. You will need a pen and paper to record the answers. Enjoy!

See the last page for details on how to check your answers and download your certificate.



Start



Follow me



Answer a
question



A good
view



Map overlap



The end!

Distance: 4km

Time: 1 hour 30 minutes - 2 hours

Terrain: a mix of tarmac and footpaths with the chance of some mud if it's been raining!
Mostly flat with a couple of hills.

Suitable for: all ages. Pushchair and dog friendly.



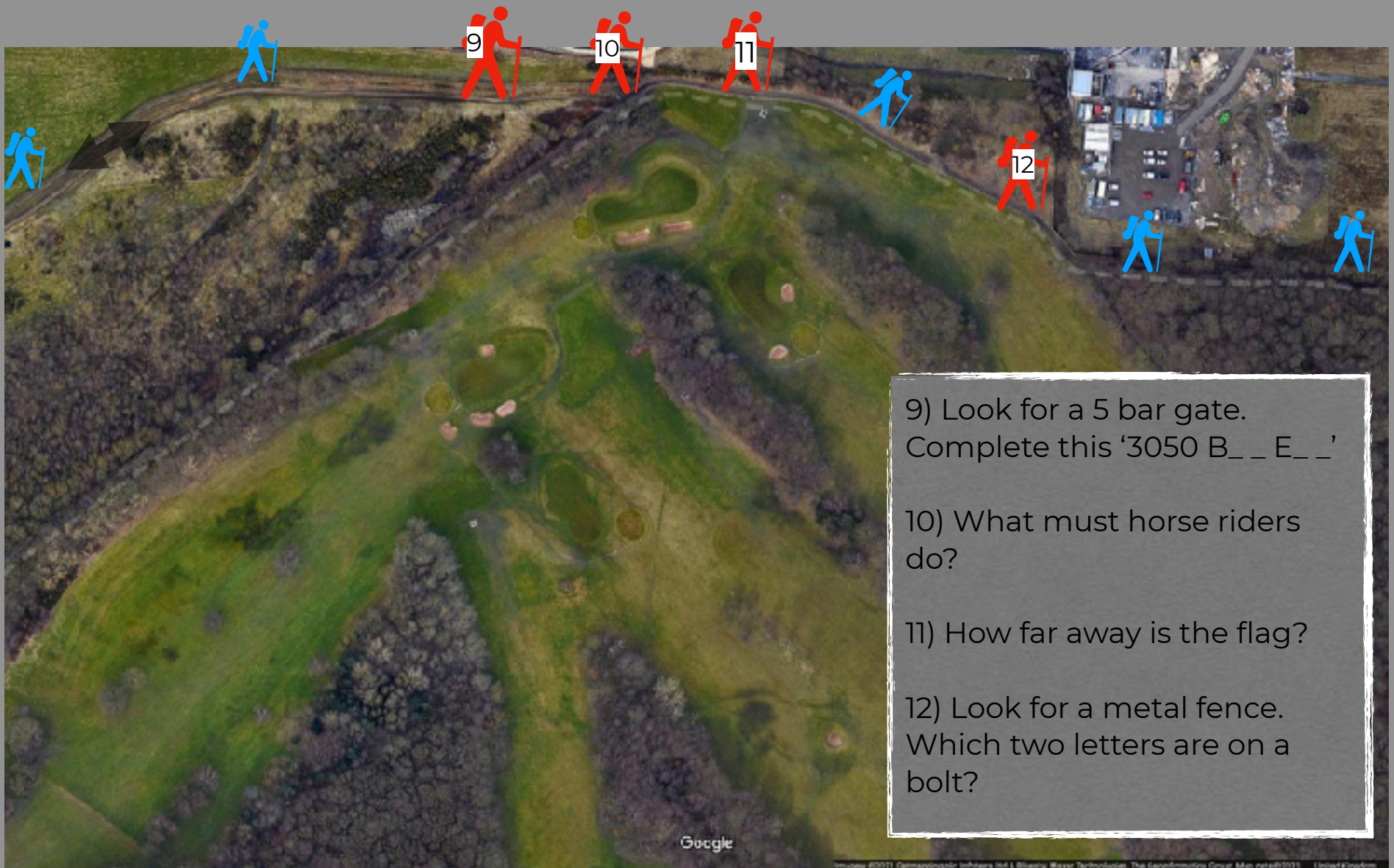




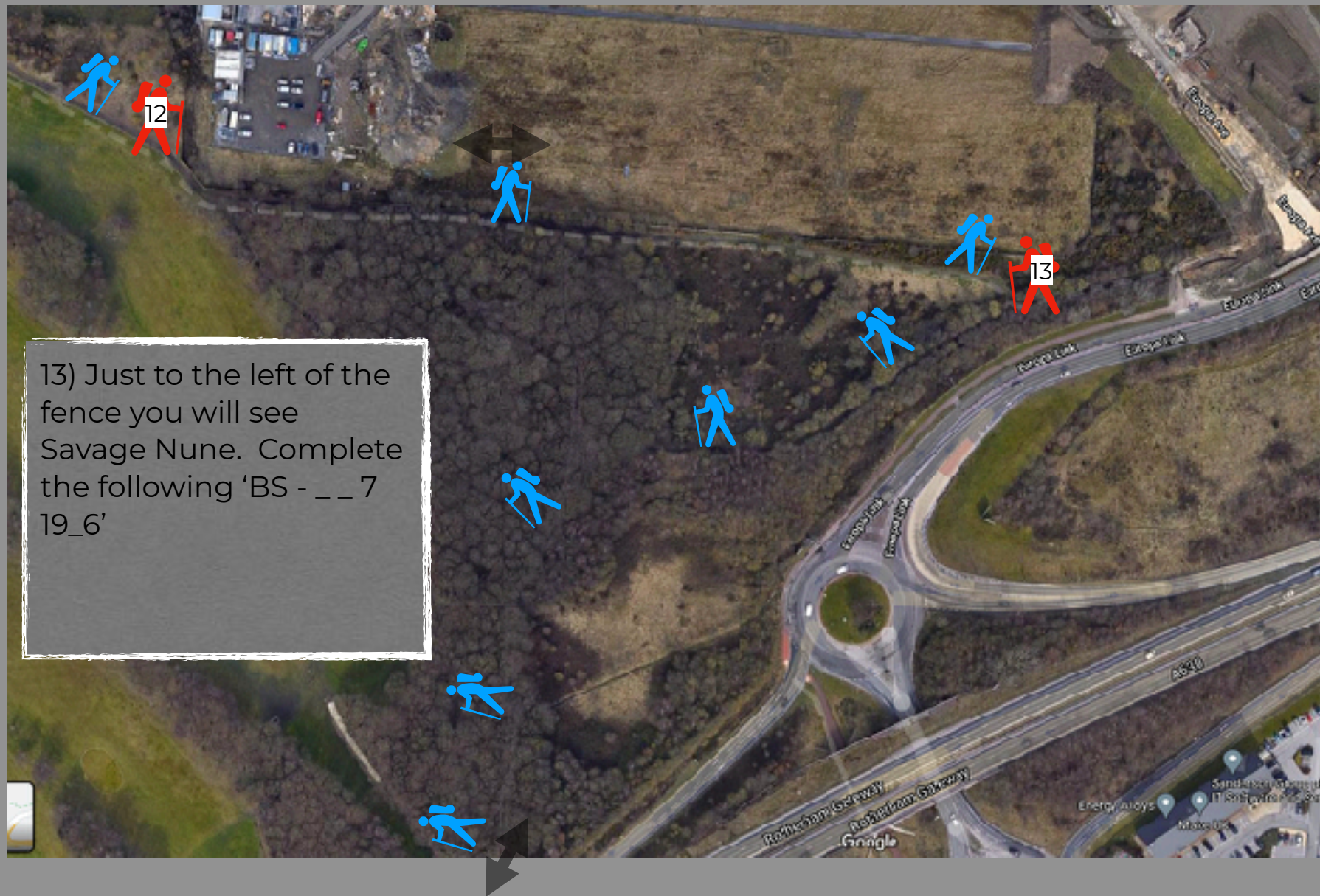
7) Look for a manhole cover.
What comes after EN?

8) Complete this word -
Pap_ _ _ _





- 9) Look for a 5 bar gate.
Complete this '3050 B _ _ E _ _'
- 10) What must horse riders
do?
- 11) How far away is the flag?
- 12) Look for a metal fence.
Which two letters are on a
bolt?



14) Which road would you take
for Catcliffe? B_ _ _ _

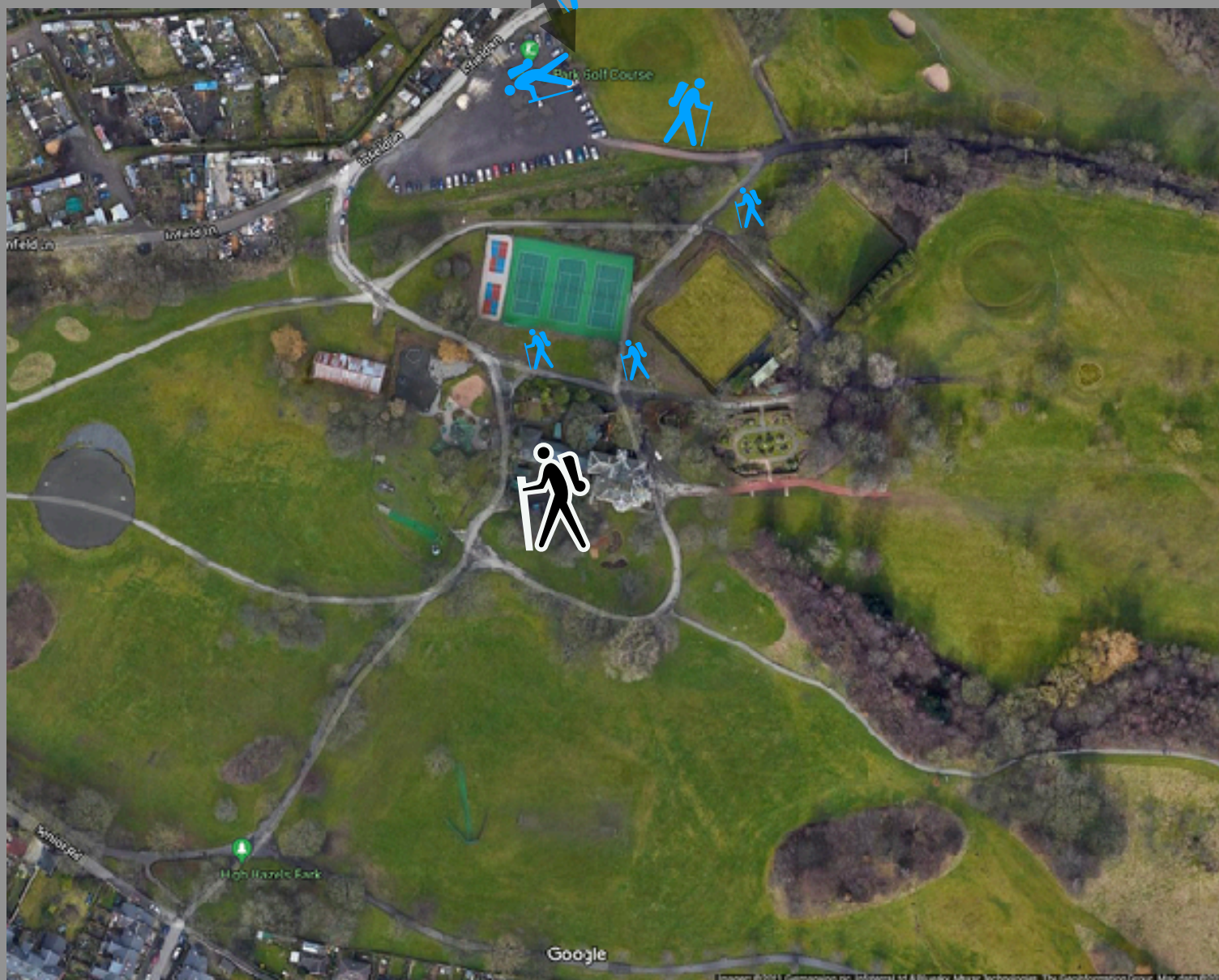






17) Darnall on one side, _ _ _ _ _
_ _ _ _ _ on the other.

18) Who commissioned this
map?



Congratulations!

You made it!

Check your answers at www.beyondthe4walls.co.uk/answers where can also download a certificate.

We really hope you've enjoyed this walk.

We welcome any feedback, the good and the not so good!

Contact Dom at info@beyondthe4walls.co.uk

Check out www.beyondthe4walls.co.uk to discover more ways to get outside more often.