

## Happy Easter! Welcome to the first SSELP and Beyond The 4 Walls family treasure hunt walk.

Take a look at the map below and follow the walking icons. You can start anywhere. There is parking by the start or on City Road (Manor Fields Park). There are 18 questions to answer along the way. You will need a pen and paper to record the answers. Enjoy!

See the last page for details on how to check your answers and download your certificate.



Start



Follow me



Answer a  
question



A good  
view



Map overlap



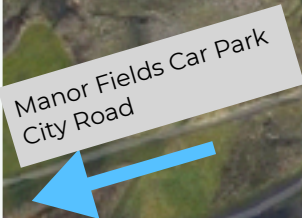
The end!

**Distance:** 4km

**Time:** 1 hour 30 minutes - 2 hours

**Terrain:** mostly flat, tarmac paths with a couple of gravel paths.

**Suitable for:** all ages. Pushchair and dog friendly. One set of avoidable steps.

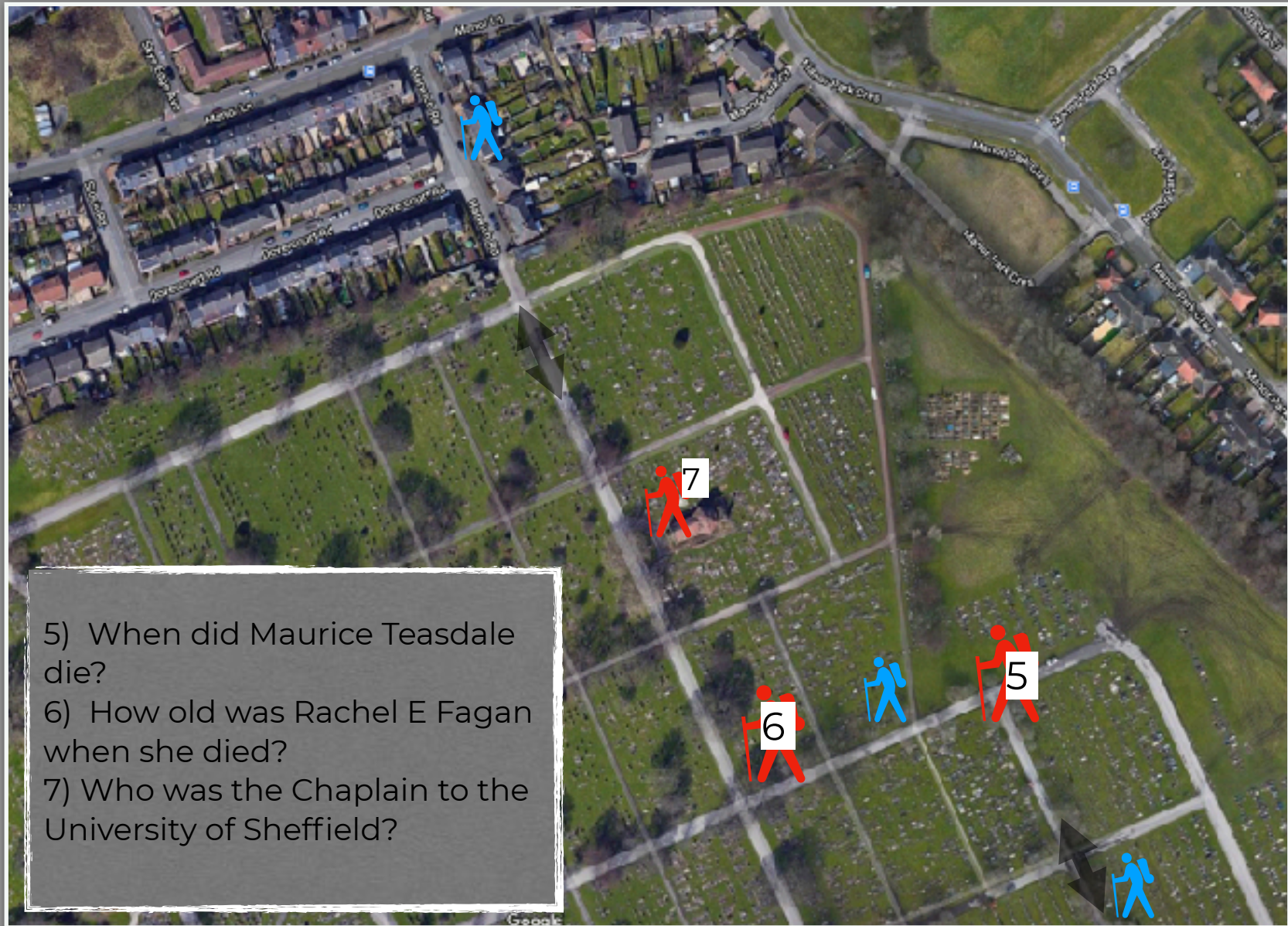


- 1) How many church wardens are there?
- 2) Which football team does this home owner support?
- 3) What colour is the playground gate?
- 4) Complete the following 'City Road and ...









- 5) When did Maurice Teasdale die?
- 6) How old was Rachel E Fagan when she died?
- 7) Who was the Chaplain to the University of Sheffield?



















# Congratulations!

**You made it!**

Check your answers at [www.beyondthe4walls.co.uk/answers](http://www.beyondthe4walls.co.uk/answers) where can also download a certificate.

We really hope you've enjoyed this walk. This is hopefully the first of many!

We welcome any feedback, the good and the not so good!  
Contact Dom at [info@beyondthe4walls.co.uk](mailto:info@beyondthe4walls.co.uk)

Check out [www.beyondthe4walls.co.uk](http://www.beyondthe4walls.co.uk) to discover more ways to get outside more often.